



### SITE LEGEND:

- 1 Youth Soccer Field
- 2 Existing Park Parking
- 3 Existing Baseball Field
- 4 Existing Softball Field
- 5 Existing Soccer Field
- 6 Gathering Space
- 7 Trail
- 8 Neighborhood Connections / Entry
- 9 Vegetative Buffer
- 10 Storage
- 1 Demolish Existing Structures
- Pathway Lighting
- Field Lighting
- ▬ Scoreboard
- ▽ Security Camera

The proposed extension of Hewitt Ave into the park requires review and approval by City Council, city traffic engineer and block club representatives.

# McCarthy Park (North End)

City of Buffalo Parks & Buffalo Public School Facilities Survey & Design Development







**SITE LEGEND:**

- 1 Existing Soccer Field
- 2 Existing Football Field
- 3 Existing Basketball Courts
- 4 Existing Baseball Field
- 5 Reconfigured Parking Lot
- 6 Children's Play
- 7 Shade Shelter / Pavilion
- 8 Restrooms & Storage
- 9 Concessions
- 10 Trail
- 11 Neighborhood Connections / Entry
- 12 Existing Tennis Courts
- 13 ADA Compliant Fitness Area
- 14 Boulder Barrier
- Pathway Lighting
- Field Lighting
- Scoreboard
- ▽ Security Camera

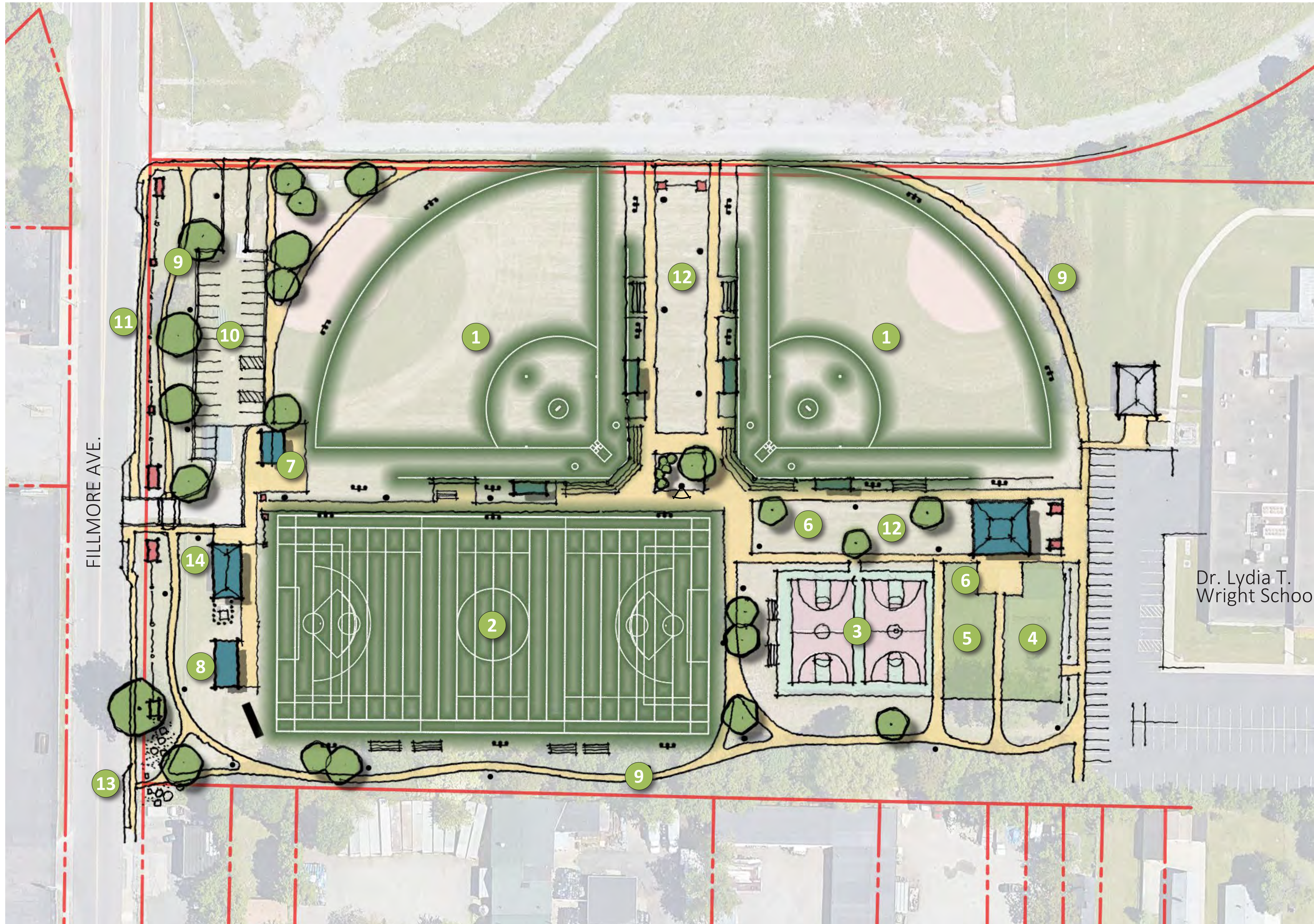
The proposed extension of Hewitt Ave into the park requires review and approval by City Council, city traffic engineer and block club representatives.

# McCarthy Park (South End)

City of Buffalo Parks & Buffalo Public School Facilities Survey & Design Development | February 2019







## SITE LEGEND:

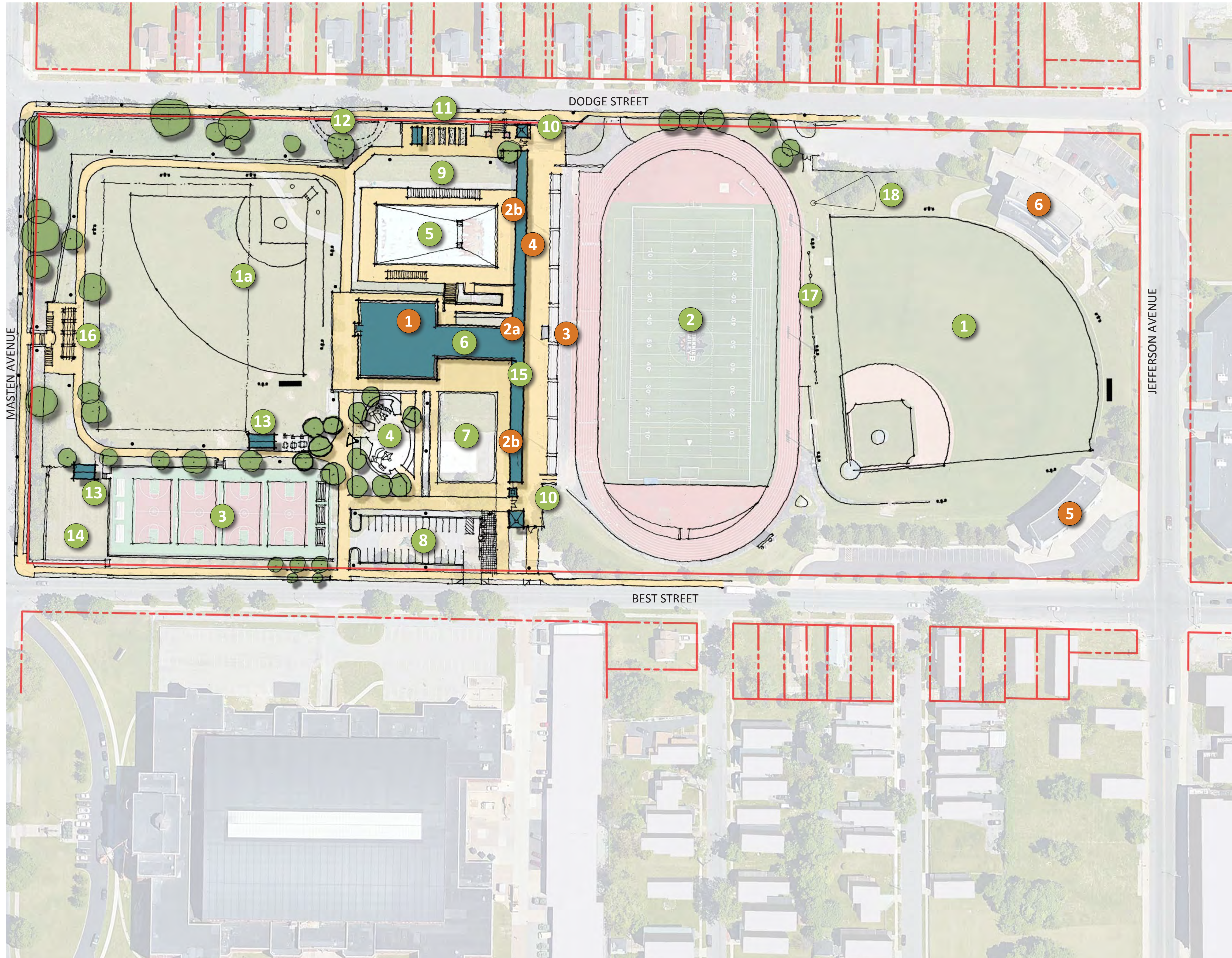
- 1 Softball Field
- 2 Multipurpose Field
- 3 Existing Basketball Courts
- 4 Existing Playground
- 5 ADA Compliant Fitness Area
- 6 Shade Shelter / Pavilion
- 7 Existing Shelter Relocated
- 8 Storage
- 9 Trail
- 10 Parking
- 11 Parallel Parking
- 12 Public Open Space
- 13 Boulder Barrier
- 14 Existing Concession / Restroom
- Pathway Lighting
- ☀ Field Lighting
- ▬ Scoreboard
- ▽ Security Camera

# Glenny Park

City of Buffalo Parks & Buffalo Public School Facilities Survey & Design Development | February 2019







## SITE LEGEND:

- |    |   |    |                          |
|----|---|----|--------------------------|
| 1  | Baseball Field (Synthetic Turf)                   | 9  | Open Space               |
| 1a | Softball Field                                    | 10 | New Entrance Gates       |
| 2  | Existing Multi-purpose Field (New Synthetic Turf) | 11 | Community Gardens        |
| 3  | Existing Basketball Courts                        | 12 | Demolish Existing Stairs |
| 4  | Playground  | 13 | Shelter                  |
| 5  | Pool  | 14 | ADA Compliant Fitness    |
| 6  | New Building                                      | 15 | Locker Room Expansion    |
| 7  | Splash Pad  | 16 | Trellis Structure        |
| 8  | Parking   | 17 | High Screen              |
| ●  | Pathway Lighting                                  | 18 | Shot-put                 |
| ☼  | Field Lighting                                    |    |                          |
| ▬  | Scoreboard  |    |                          |
| 📹  | Security Camera                                   |    |                          |

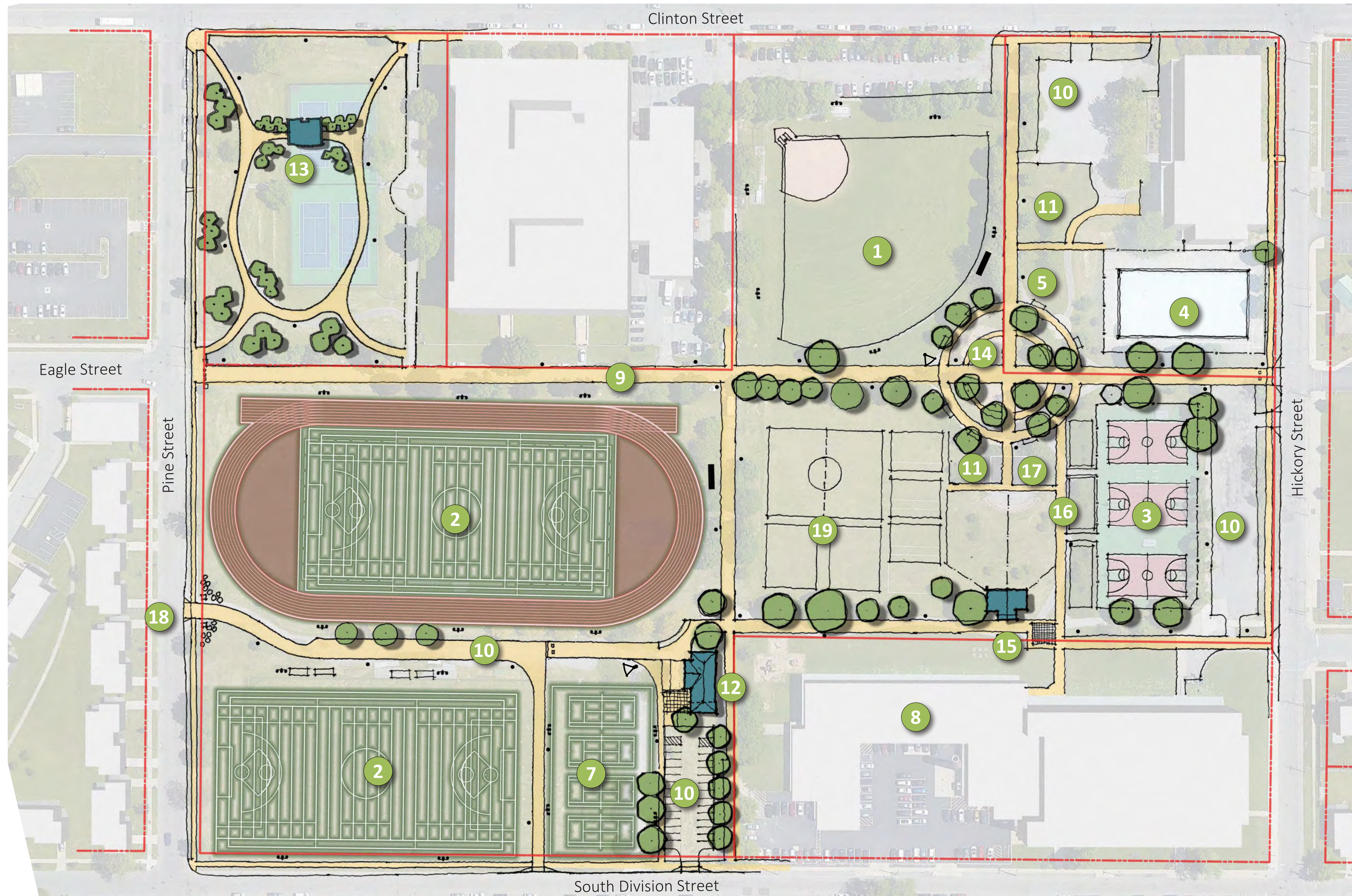
- |    |   |
|----|---|
| 1  | Demolish entire building.   |
| 2a | Complete renovation of concession stand. Possible expansion into locker rooms.  |
| 2b | Renovate to provide: new entry to expanded locker room, referee locker room, training room  |
| 2c | Renovate locker room into public toilets. Womens: 8 WC, 8 LAV. Mens: 5 WC, 5 URINALS, 8 LAV   |
| 3  | Replace press box. Capacity for 10 people   |
| 4  | Repair damaged facade, paint entire facade, and replace roof.   |
| 5  | Restore ticket booth to original condition. Renovate 1st Floor to be a museum for old rock pile. Renovate 2nd & 3rd Floors to be boxing training area. Include elevator, locker rooms, toilet rooms, reconfigure stair tower replacement. |
| 6  | Renovate 1st & 2nd Floors. Add technology upgrades throughout entire building. Roof replacement.  |

# JBW / Masten Park

City of Buffalo Parks & Buffalo Public School Facilities Survey & Design Development | February 2019







### SITE LEGEND:

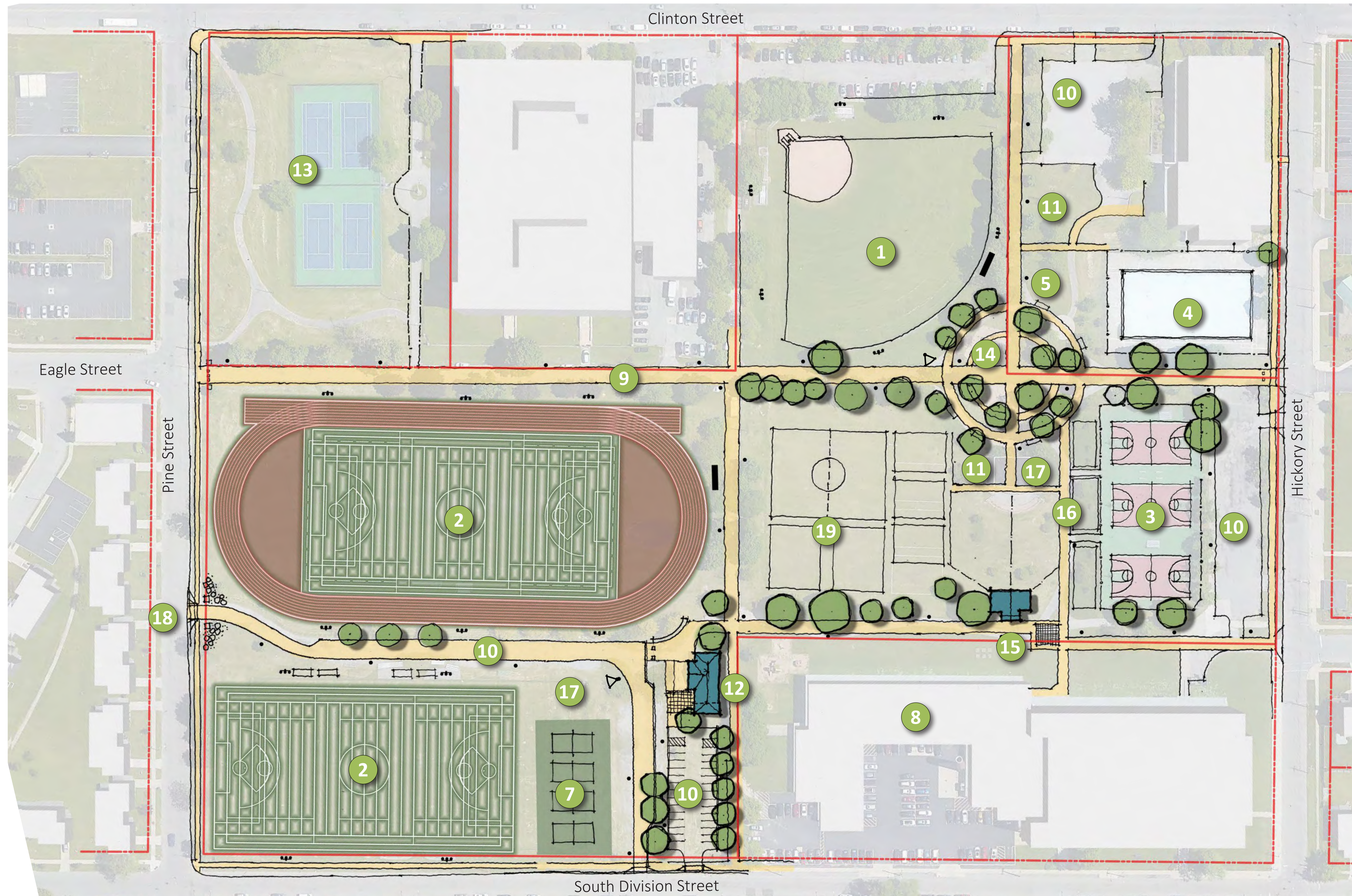
- 1 Softball Field
- 2 Multipurpose Field / Track
- 3 Existing Basketball Courts
- 4 Existing Pool
- 5 Adult Fitness
- 6 Shade Shelter / Pavilion
- 7 Tennis Courts
- 8 Buffalo Elementary School of Technology
- 9 Trail
- 10 Parking
- 11 Play Equipment (Age 2-5)
- 12 Existing Concession
- 13 Former Bennett Park (FLO)
- 14 Public Gathering Space
- 15 Bandshell / Pavilion
- 16 Youth Challenge Course
- 17 Play Equipment (Age 5-12)
- 18 Boulder Barrier
- 19 Youth Soccer
- Pathway Lighting
- ☀ Field Lighting
- ▬ Scoreboard
- ▽ Security Camera

# JFK Park (Option 1)

City of Buffalo Parks & Buffalo Public School Facilities Survey & Design Development | February 2019







### SITE LEGEND:

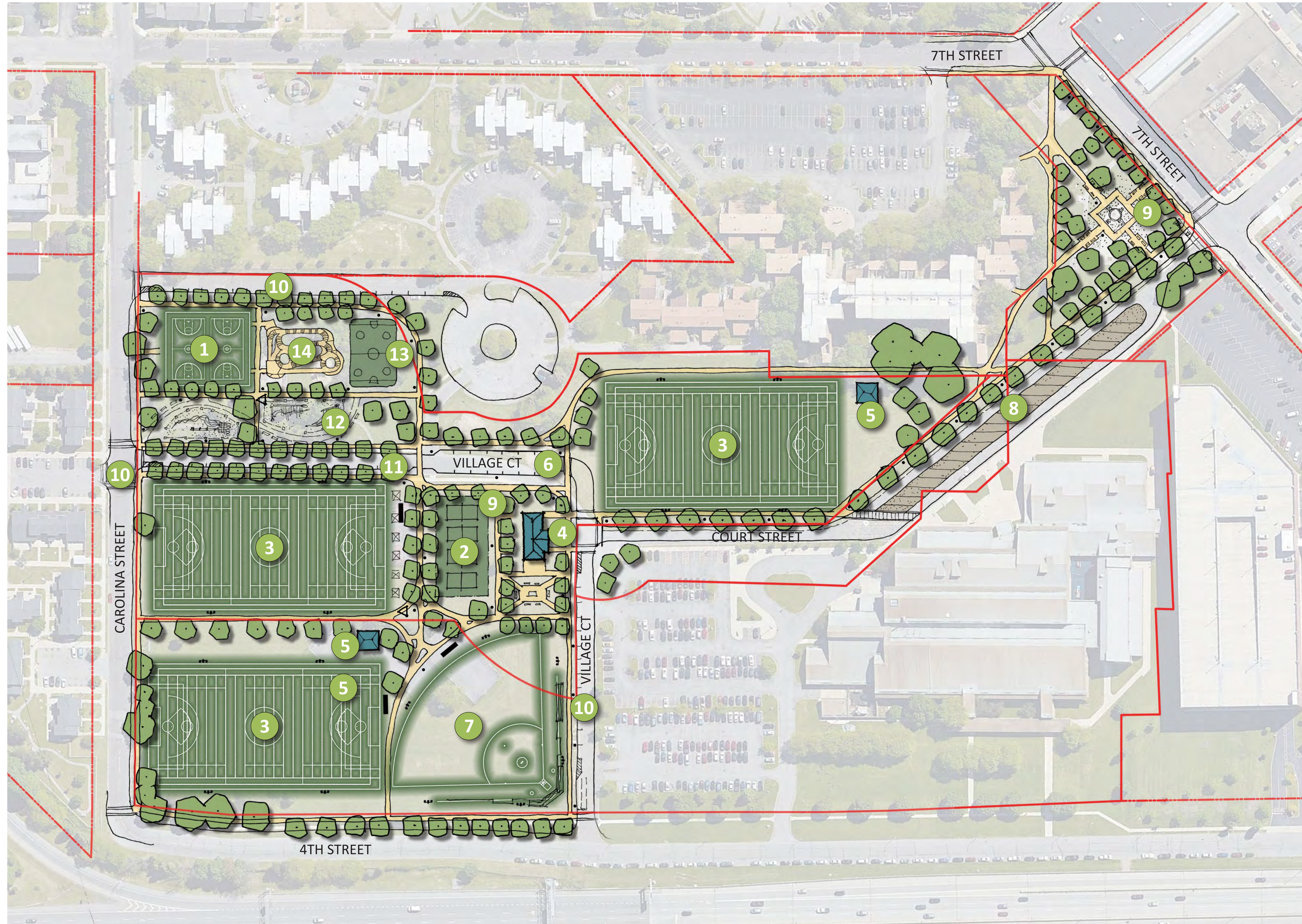
- 1 Softball Field
- 2 Multipurpose Field / Track
- 3 Existing Basketball Courts
- 4 Existing Pool
- 5 Adult Fitness
- 6 Shade Shelter / Pavilion
- 7 Pickleball Courts
- 8 Buffalo Elementary School of Technology
- 9 Trail
- 10 Parking
- 11 Play Equipment (Age 2-5)
- 12 Existing Concession
- 13 Existing Tennis Courts
- 14 Public Gathering Space
- 15 Bandshell / Pavilion
- 16 Youth Challenge Course
- 17 Play Equipment (Age 5-12)
- 18 Boulder Barrier
- 19 Youth Soccer
- Pathway Lighting
- Field Lighting
- Scoreboard
- ▽ Security Camera

# JFK Park (Option 2)

City of Buffalo Parks & Buffalo Public School Facilities Survey & Design Development | February 2019







## SITE LEGEND:

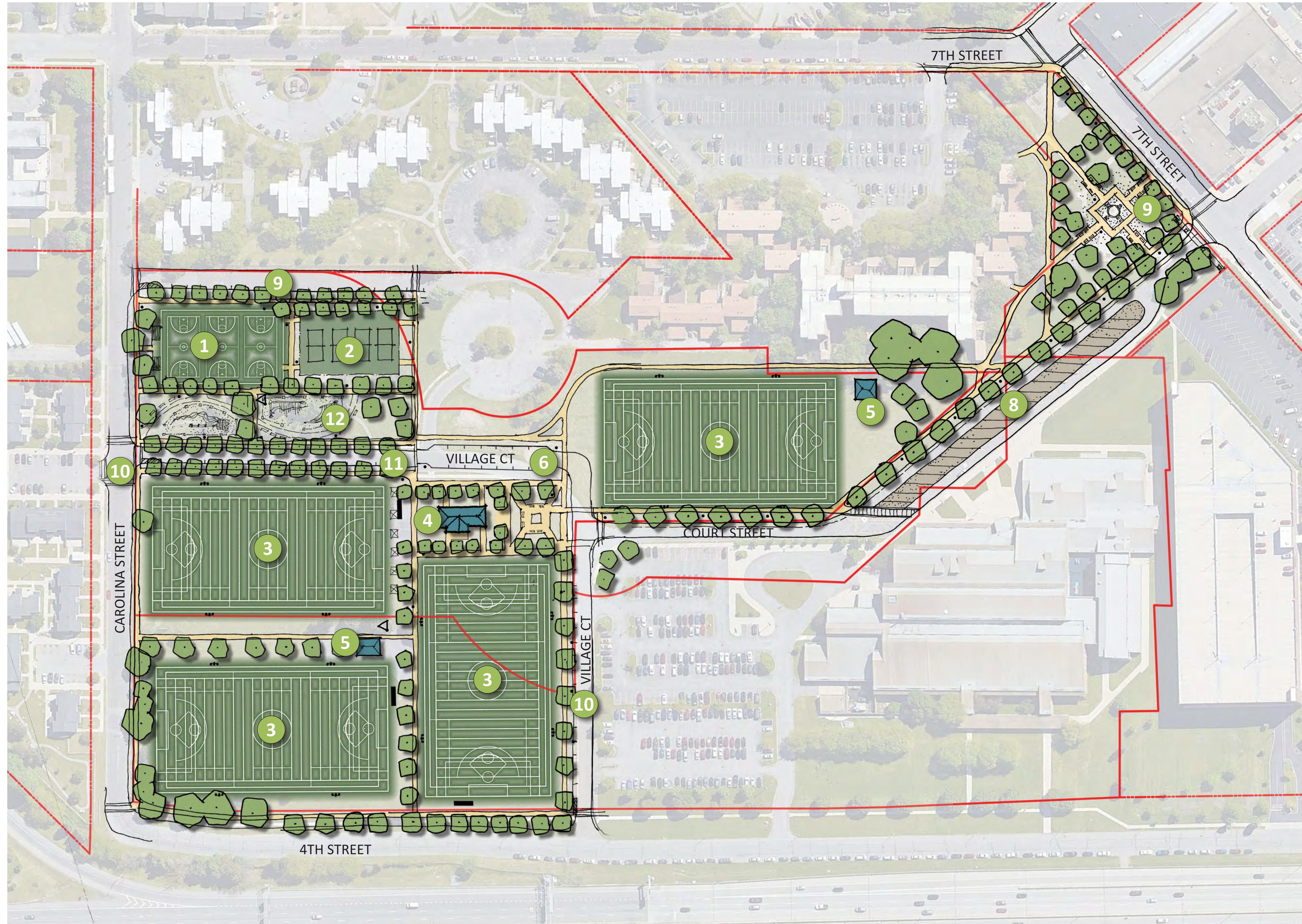
- 1 Basketball Courts
- 2 Pickleball Courts
- 3 Multipurpose Field
- 4 Concessions & Restrooms
- 5 Shade Shelter
- 6 Parking (On Street Parallel)
- 7 Softball Field
- 8 Court Street (one-way) with Bike Lane
- 9 Passive Park
- 10 On Street Parking
- 11 Traffic Calming
- 12 Playground Equipment
- 13 Roller Hockey
- 14 Bike Pump Track
- Pathway Lighting
- ⦿ Field Lighting
- ▬ Scoreboard
- ▽ Security Camera

# Waterfront Park (Option 1)

City of Buffalo Parks & Buffalo Public School Facilities Survey & Design Development | February 2019







## SITE LEGEND:

- 1 Basketball Courts
- 2 Pickleball Courts
- 3 Multipurpose Field
- 4 Concessions & Restrooms
- 5 Shade Shelter
- 6 Parking (On Street Parallel)
- 7 Court Street (one-way) with Bike Lane
- 8 Passive Park
- 9 On Street Parking
- 10 Traffic Calming
- 11 Playground Equipment
- Pathway Lighting
- Field Lighting
- Scoreboard
- ▽ Security Camera

# Waterfront Park (Option 2)

City of Buffalo Parks & Buffalo Public School Facilities Survey & Design Development | February 2019







## SITE LEGEND:

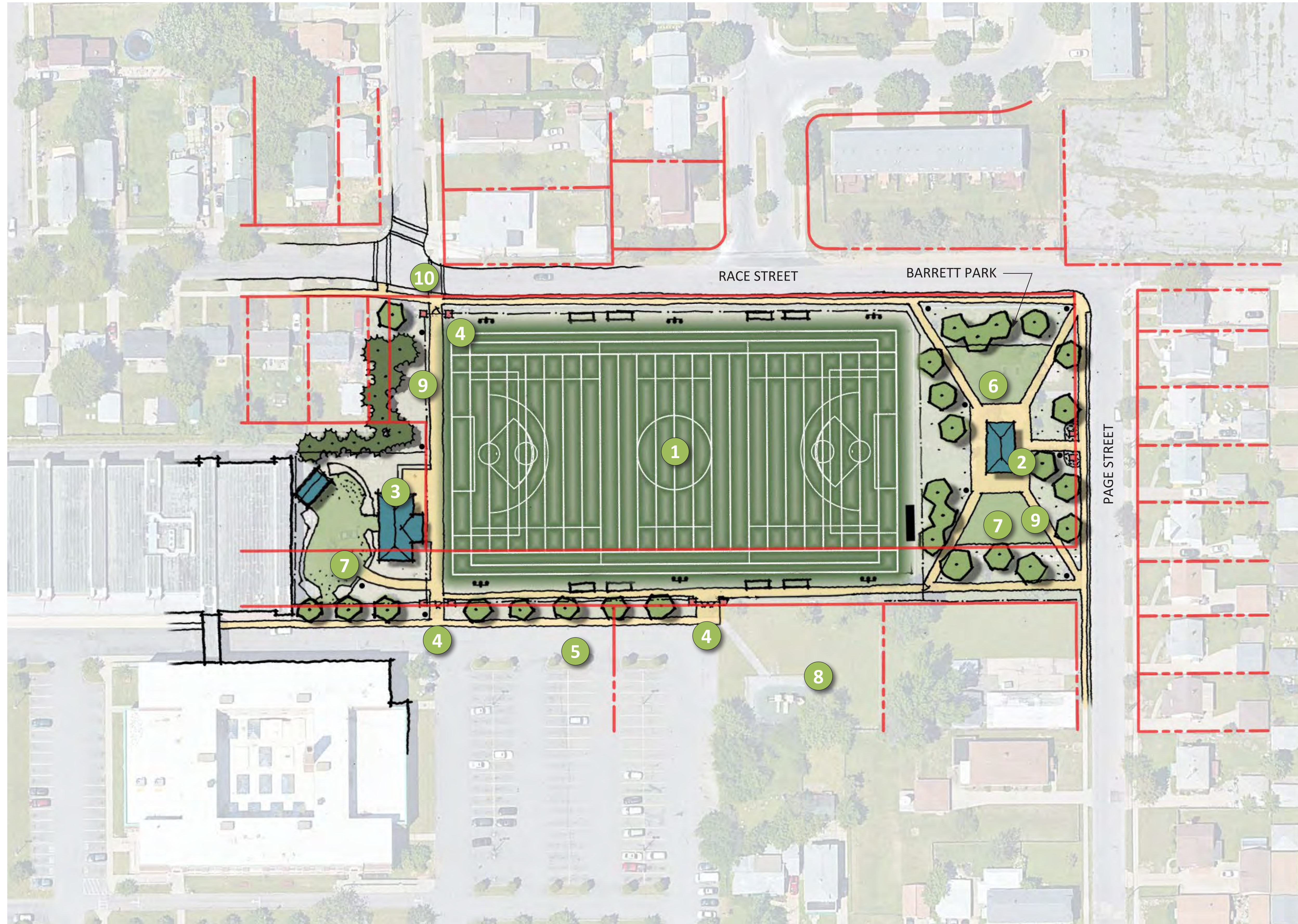
- 1 Rebuilt Multipurpose Field
- 2 Rebuilt Synthetic Track
- 3 Concessions & Bathrooms
- 4 New Entrance Drive & Drop Off
- 5 Expanded Parking
- 6 Playground
- 7 Trail
- 8 Public Open Space
- 9 Overlook / Pier
- 10 Barrier
- Pathway Lighting
- ⦿ Field Lighting
- ▬ Scoreboard
- ▽ Security Camera

# Mungovan Park

City of Buffalo Parks & Buffalo Public School Facilities Survey & Design Development | February 2019







## SITE LEGEND:

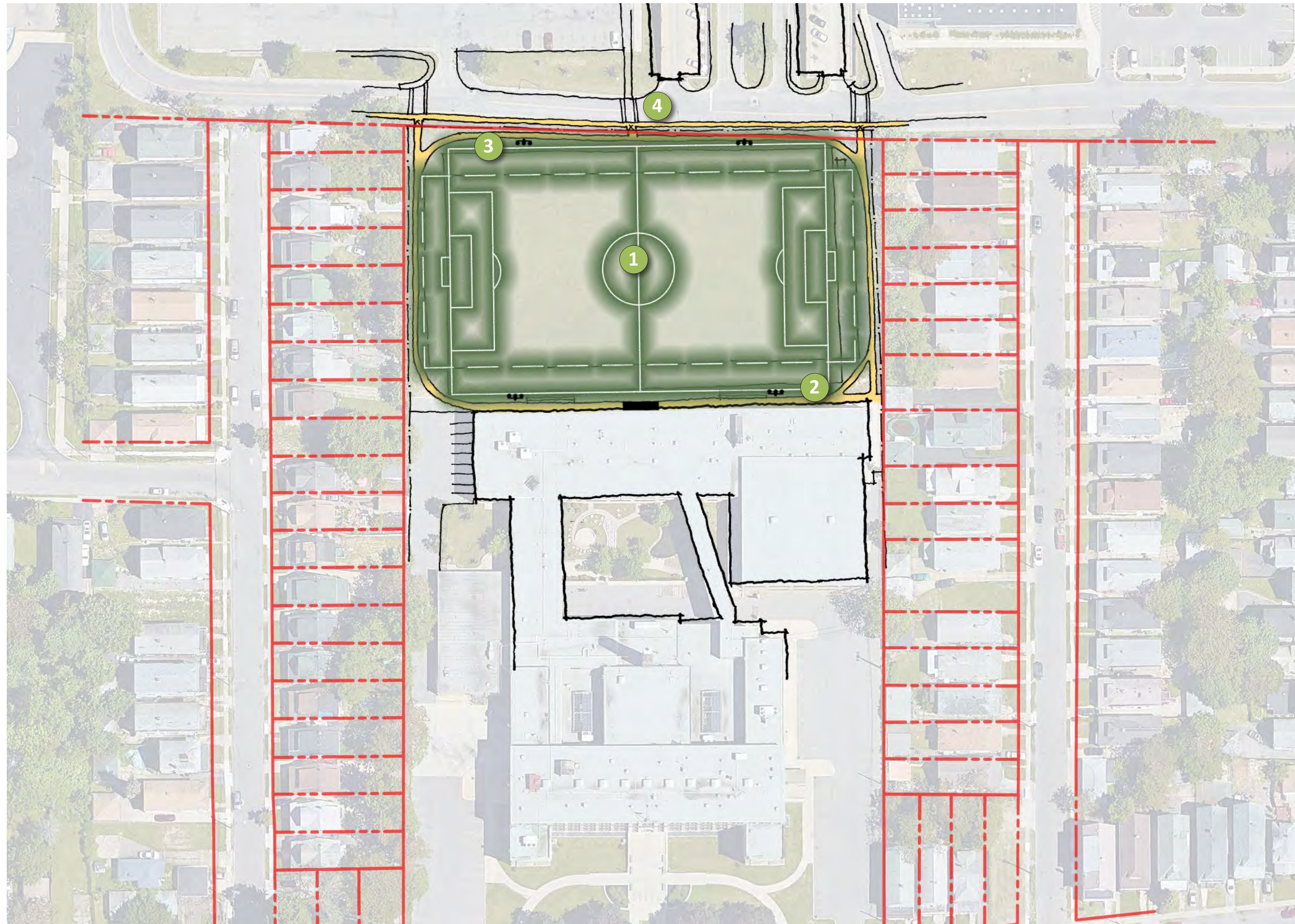
- 1 Multipurpose Synthetic Field
- 2 Shade Shelter / Pavilion
- 3 Concessions / Restrooms
- 4 Gateways
- 5 Existing Parking
- 6 Play Equipment (Ages 2-5)
- 7 Play Equipment (Ages 5-12)
- 8 Existing Play Equipment
- 9 Pathways / Plantings
- 10 Crosswalk Improvements
- Pathway Lighting
- Field Lighting
- Scoreboard

# Gabriaz School of Excellence

City of Buffalo Parks & Buffalo Public School Facilities Survey & Design Development | February 2019







**SITE LEGEND:**

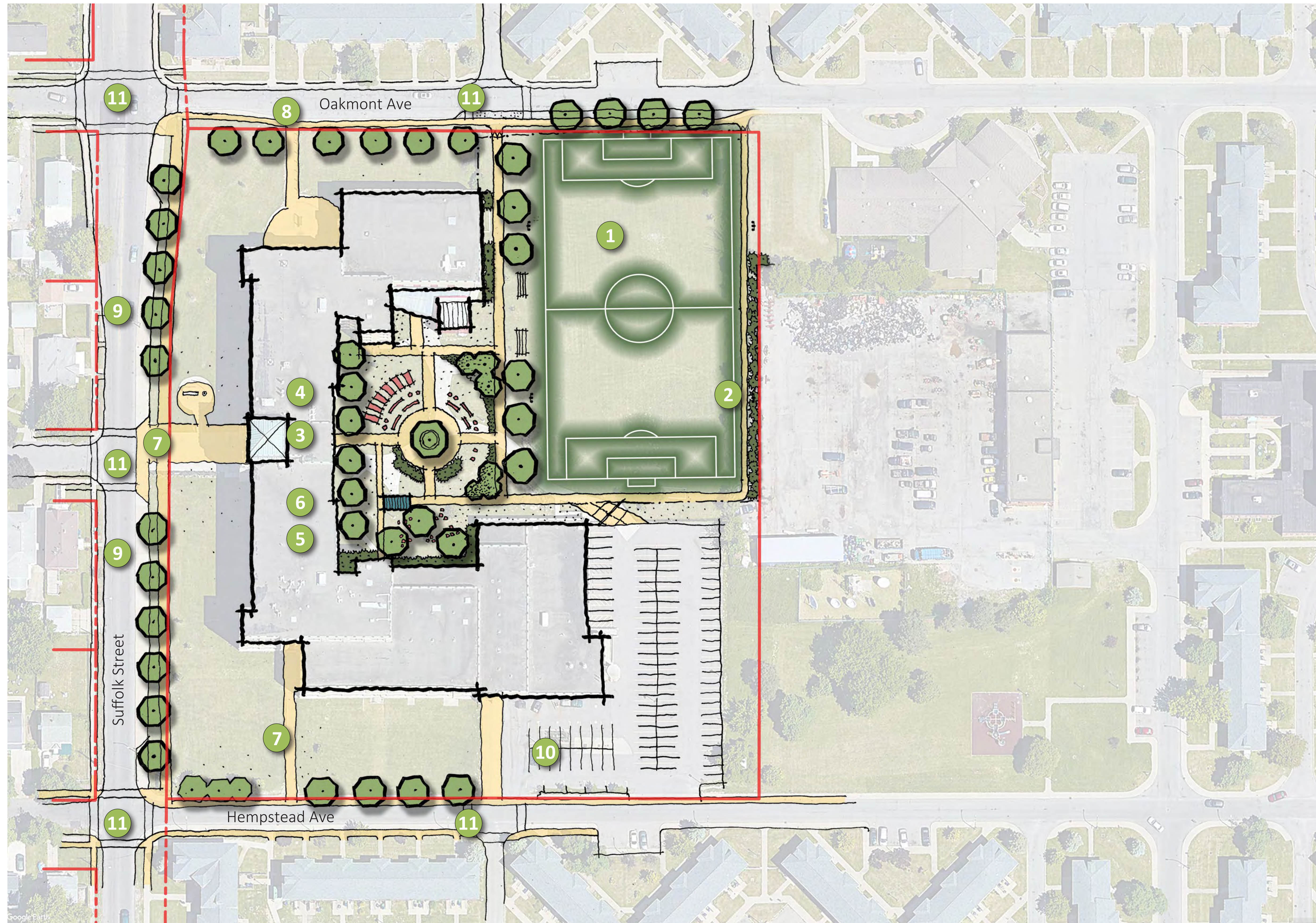
- 1 Existing Multipurpose Field
- 2 Bleachers
- 3 Perimeter Walking Path
- 4 Access Gate to ECMC
- Field Lighting
- ▬ Scoreboard

# Seneca (MST) HS PS # 197

City of Buffalo Parks & Buffalo Public School Facilities Survey & Design Development | February 2019







## SITE LEGEND:

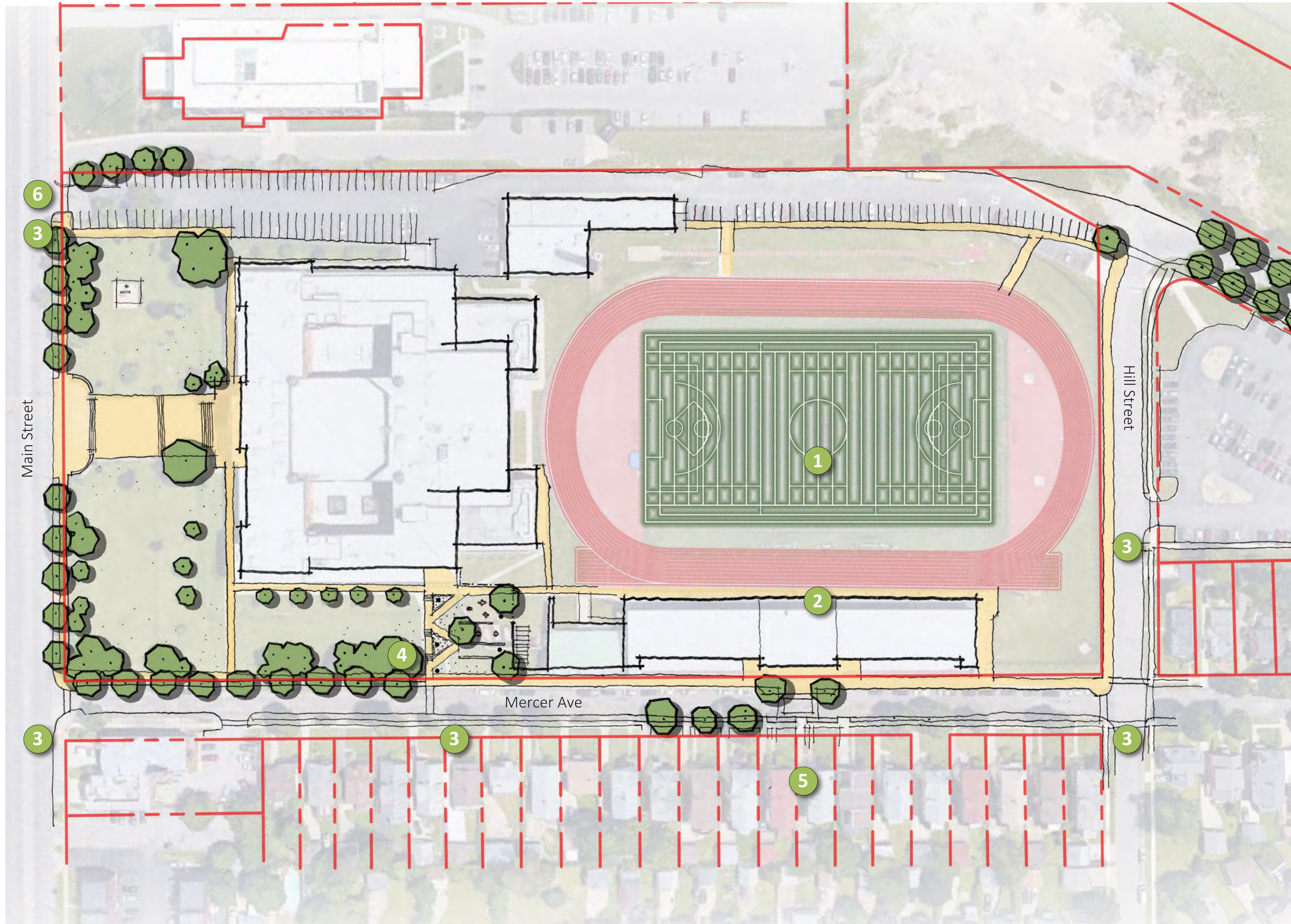
- 1 Soccer Field
- 2 Vegetative Screening / Fence
- 3 Outdoor Classroom
- 4 Learning Gardens
- 5 Gathering space
- 6 Existing Shade Shelter
- 7 Walkway
- 8 Existing Bus Staging/Drop off
- 9 Proposed Bus Staging/Drop off
- 10 Parking
- 11 Crosswalk
- ☼ Field Lighting

# F.L. Olmsted PS # 156

City of Buffalo Parks & Buffalo Public School Facilities Survey & Design Development | February 2019







## SITE LEGEND:

- 1 Multipurpose Field (resurface)
- 2 Track (resurface)
- 3 Crosswalk Improvements
- 4 Improved Accessible Entrance and Gathering Space
- 5 Traffic Calming at Stadium Entrance
- 6 Parking/ Circulation Improvements
- Pathway Lighting

# All-High Stadium

City of Buffalo Parks & Buffalo Public School Facilities Survey & Design Development | February 2019







**SITE LEGEND:**

- 1 Multipurpose Field (resurface)
- 2 Concession Building
- 3 Ticket Booth
- 4 Turf Stabilization
- 5 Walkways from Bus Transfer
- 6 Entry Courtyard

# Riverside HS

City of Buffalo Parks & Buffalo Public School Facilities Survey & Design Development | February 2019

